



EYE LIGHTING LED PRODUCT CATALOGUE

OUTDOOR . INDOOR . INDUSTRIAL . COMMERCIAL

EYELITE



**REMOVABLE GEAR TRAY
&
TOOLLESS GEAR ACCESS**

30W to 180W



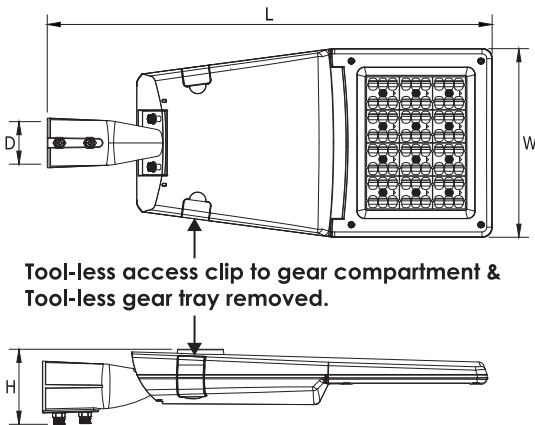
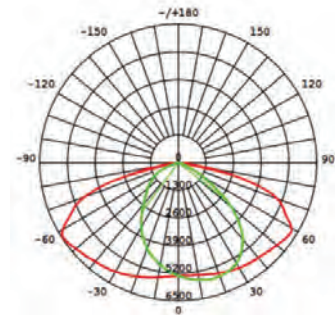
Flora Damansara, PJ



Pines Square, Sarawak

 DIMENSION

***Typical dimension in mm**

 **PHOTOMETRIC/BEAM ANGLE**

Type II

***Type I & other beam available upon request.**

FEATURES

- The high lumen output LED array, provides even lighting distribution.
- Streamline & smooth surface lamp housing, prevent dust & dirt deposition on top.
- Tool-less access to gear compartment for easy maintenance.
- ADC 12 high pressure die-cast aluminium body construction for strength and durability.
- The IP66 rated sealed fixtures protect it from ingress of water and dust in harsh outdoor environment.
- High efficiency with trusted and reliable LED components.

 **MOUNTING TYPE**

Post Top

Side Entry



- Interchangeable spigot mounting position.
- Allowable tilt 0° to +15° with 5° tilt.



MODEL NO.	EY628-30W-P		EY628-50W-P		EY628-60W-P		EY628-70W-P	
Power Consumption ±5% (W)	30W		50W		60W		70W	
	at 6000K	at 3000K	at 6000K	at 3000K	at 6000K	at 3000K	at 6000K	at 3000K
Luminaire Flux ±5% (lm)	4,933	4,676	7,700	7,457	9,060	9,000	10,878	10,298
System Efficacy ±5% (lm/W)	153	145	154	145	151	143	150	142
Power Factor (PF)	0.99		0.98		0.98		0.98	
LED Quantity	18		36		36		36	
Spigot Mounting Hole, D (mm)	50/60*		50/60*		50/60*		50/60*	
Net Weight (kg)	3.45		3.52		3.61		3.61	
Gross Weight (kg)	4.05		4.12		4.21		4.21	
Product Dimension, L x W x H (mm)	569 x 230 x 111							
Carton Dimension, L x W x H (mm)	610 x 283 x 175							
CBM (m³)	0.030							

MODEL NO.	EY628-80W-P		EY628-90W-P		EY628-100W-P		EY628-120W-P	
Power Consumption ±5% (W)	80W		90W		100W		120W	
	at 6000K	at 3000K	at 6000K	at 3000K	at 6000K	at 3000K	at 6000K	at 3000K
Luminaire Flux ±5% (lm)	12,160	12,031	13,680	13,273	15,900	15,719	19,560	18,120
System Efficacy ±5% (lm/W)	152	146	152	144	159	154	163	151
Power Factor (PF)	0.97		0.98		0.96		0.98	
LED Quantity	48		48		72		72	
Spigot Mounting Hole, D (mm)	60		60		60		60	
Net Weight (kg)	5.40		5.40		5.47		5.67	
Gross Weight (kg)	6.25		6.25		6.32		6.52	
Product Dimension, L x W x H (mm)	679 x 288 x 115							
Carton Dimension, L x W x H (mm)	730 x 335 x 175							
CBM (m³)	0.043							

MODEL NO.	EY628-120WL-P		EY628-150W-P		EY628-180W-P	
Power Consumption ±5% (W)	120W		150W		180W	
	at 6000K	at 3000K	at 6000K	at 3000K	at 6000K	at 3000K
Luminaire Flux ±5% (lm)	20,706	19,678	23,250	24,108	27,180	25,467
System Efficacy ±5% (lm/W)	161	160	155	158	151	140
Power Factor (PF)	0.98		0.98		0.98	
LED Quantity	96		96		96	
Spigot Mounting Hole, D (mm)	60		60		60	
Net Weight (kg)	7.53		7.53		7.68	
Gross Weight (kg)	8.54		8.54		8.78	
Product Dimension, L x W x H (mm)	752 x 308 x 116					
Carton Dimension, L x W x H (mm)	795 x 356 x 175					
CBM (m³)	0.050					

Note 1: The above specified lumen and system efficiency are based on standard CCT: 6000K & 3000K, CRI: RA70

Note 2: * Spigot size available for selection, and only one default size stock available for certain ASEAN region

Note 3: The new lm/W will be updated by April 2025

The above content are subjected to change without prior notice. 2025 © IWASAKI ELECTRIC CO., LTD. All Rights Reserved.



MODEL NO.	EY628-30W-E		EY628-50W-E		EY628-60W-E		EY628-70W-E	
Power Consumption ±5% (W)	30W		50W		60W		70W	
	at 6000K	at 3000K	at 6000K	at 3000K	at 6000K	at 3000K	at 6000K	at 3000K
Luminaire Flux ±5% (lm)	4,440	4,194	7,500	7,100	8,700	8,433	10,275	9,566
System Efficacy ±5% (lm/W)	148	140	150	142	145	139	137	135
Power Factor (PF)	0.91		0.96		0.96		0.96	
LED Quantity	36		72		72		72	
Spigot Mounting Hole, D (mm)	50/60*		50/60*		50/60*		50/60*	
Net Weight (kg)	3.25		3.32		3.41		3.41	
Gross Weight (kg)	3.95		3.98		4.01		4.01	
Product Dimension, L x W x H (mm)	569 x 230 x 111							
Carton Dimension, L x W x H (mm)	610 x 283 x 175							
CBM (m³)	0.030							

MODEL NO.	EY628-80W-E		EY628-90W-E		EY628-100W-E		EY628-120W-E	
Power Consumption ±5% (W)	80W		90W		100W		120W	
	at 6000K	at 3000K	at 6000K	at 3000K	at 6000K	at 3000K	at 6000K	at 3000K
Luminaire Flux ±5% (lm)	11,680	11,120	12,780	12,436	15,000	14,478	17,400	16,710
System Efficacy ±5% (lm/W)	146	139	142	138	150	144	145	139
Power Factor (PF)	0.96		0.96		0.97		0.96	
LED Quantity	96		96		144		144	
Spigot Mounting Hole, D (mm)	60		60		60		60	
Net Weight (kg)	5.20		5.20		5.27		5.47	
Gross Weight (kg)	6.05		6.05		6.12		6.32	
Product Dimension, L x W x H (mm)	679 x 288 x 115							
Carton Dimension, L x W x H (mm)	730 x 335 x 175							
CBM (m³)	0.043							

MODEL NO.	EY628-120WL-E		EY628-150W-E		EY628-180W-E	
Power Consumption ±5% (W)	120W		150W		180W	
	at 6000K	at 3000K	at 6000K	at 3000K	at 6000K	at 3000K
Luminaire Flux ±5% (lm)	18,600	18,000	22,500	21,657	26,280	25,456
System Efficacy ±5% (lm/W)	155	150	150	144	146	141
Power Factor (PF)	0.96		0.97		0.96	
LED Quantity	192		192		192	
Spigot Mounting Hole, D (mm)	60		60		60	
Net Weight (kg)	7.33		7.33		7.48	
Gross Weight (kg)	8.34		8.34		8.58	
Product Dimension, L x W x H (mm)	752 x 308 x 116					
Carton Dimension, L x W x H (mm)	795 x 356 x 175					
CBM (m³)	0.050					

Note: The above specified lumen and system efficiency are based on standard CCT: 6000K & 3000K, CRI:RA70

Note 2: * Spigot size available for selection, and only one default size stock available for certain ASEAN region

Note 3: The new lm/W will be updated by April 2025

PREMIUM VERSION (P)

ELECTRICAL SYSTEM

- **Input Voltage** : 100 - 240Vac, 50/60Hz
- **Insulation Class** : Class I
- **LED Driver** : Inventronic EUM IP67
- **3in1 (Dimmable)** : MOSO X6 IP67 (Alternative)
- **Surge Protection** : I_{max} 20 kA (40kV) (Built-in)

LIGHT SOURCE / OPTIC

- **LED Type** : SMD 5050 with TM21 and LM80
- **Color Temperature (CCT)** : Standard 3000K/6000K (others upon request)
- **Color Rendering Index (CRI)** : Ra > 70 (Other upon request)
- **Life Time Residual Flux** : (L80), >50,000 hours @ Ta : 45°
- **Optical System** : PC Lens with Tempered Glass Cover
- **Working Temperature** : Ta : -30°C to +45°C

FIXTURE/HOUSING

- **Ingress Protection (IP)** : IP66
- **Impact Resistance (IK)** : IK09
- **Housing Material** : ADC 12 Die-Cast Aluminium
- **Housing Finish** : Akzo Nobel Powder Coating - RAL 7005 Grey

COMPLIANCE

- **Type Test Certified (Luminaire)** : IEC 60598-1, IEC 60598-2-3
- **EMC Certified** : EN 55015, EN 61547
: EN 61347-1, EN 61347-2-13
- **LED Compliances Test** : IESNA LM-79, LM-80 & TM-21
- **Luminaire Performance** : IEC 62722-1, IEC 62722-2-1
- **SIRIM PCS** : PC004404 (Malaysia Only)
- **SIJIL EMAL (JKR)** : EE0220012/23/04/09
: EE022009/23/04/15
: EE0220012/23/04/10
: EE022009/23/04/16
- **Ingress Protection Test** : IEC 60529 (IP66)
- **Impact Resistance Test** : IEC 62262 (IK09)
- **RoHS** : IEC 62321

OPTIONAL FEATURES/ACCESSORIES

- NEMA Photocell / Shorting Cap
- IoT Smart System (NEMA / Zhaga)

APPLICATION

- Road & Highway • Urban Road & Streets • Residential Streets
- Car Parks • Parks • Riverside • Jogging Track

ECONOMIC VERSION (E)

ELECTRICAL SYSTEM

- **Input Voltage** : 100 - 240Vac, 50/60Hz
- **Insulation Class** : Class I
- **LED Driver** : DONE MXG IP67
- **3in1 (Dimmable)** : MOSO X6 IP67 (Alternative)
- **Surge Protection** : I_{max} 20 kA (40kV) (Built-in)

LIGHT SOURCE / OPTIC

- **LED Type** : SMD 3030 with TM21 and LM80
- **Color Temperature (CCT)** : Standard 3000K/6000K (others upon request)
- **Color Rendering Index (CRI)** : Ra > 70 (Other upon request)
- **Life Time Residual Flux** : (L80), >50,000 hours @ Ta : 45°
- **Optical System** : PC Lens with Tempered Glass Cover
- **Working Temperature** : Ta : -30°C to +45°C


FIXTURE/HOUSING

- **Ingress Protection (IP)** : IP66
- **Impact Resistance (IK)** : IK09
- **Housing Material** : ADC 12 Die-Cast Aluminium
- **Housing Finish** : Akzo Nobel Powder Coating - RAL 7005 Grey

COMPLIANCE

- **Type Test Certified (Luminaire)** : IEC 60598-1, IEC 60598-2-3
- **EMC Certified** : EN 55015, EN 61547
: EN 61347-1, EN 61347-2-13
- **LED Compliances Test** : IESNA LM-79, LM-80 & TM-21
- **Luminaire Performance** : IEC 62722-1, IEC 62722-2-1
- **SIRIM PCS** : PC004404 (Malaysia Only)
- **SIJIL EMAL (JKR)** : EE0220012/23/04/09
: EE022009/23/04/15
: EE0220012/23/04/10
: EE022009/23/04/16
: EE0220012/23/12/23
- **Ingress Protection Test** : IEC 60529 (IP66)
- **Impact Resistance Test** : IEC 62262 (IK09)
- **RoHS** : IEC 62321

OPTIONAL FEATURES/ACCESSORIES

- NEMA Photocell / Shorting Cap
- IoT Smart System (NEMA / Zhaga) 

APPLICATION

- Road & Highway • Urban Road & Streets • Residential Streets
- Car Parks • Parks • Riverside • Jogging Track

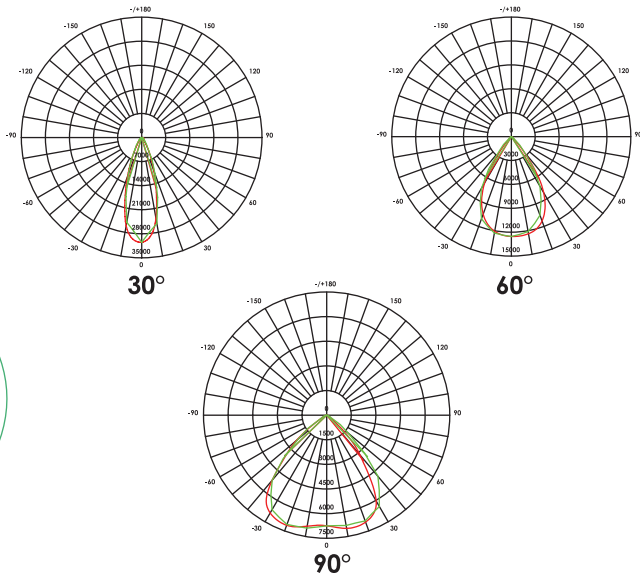
OUTDOOR LED LIGHTING

EYELITE

SHOSHA/SL

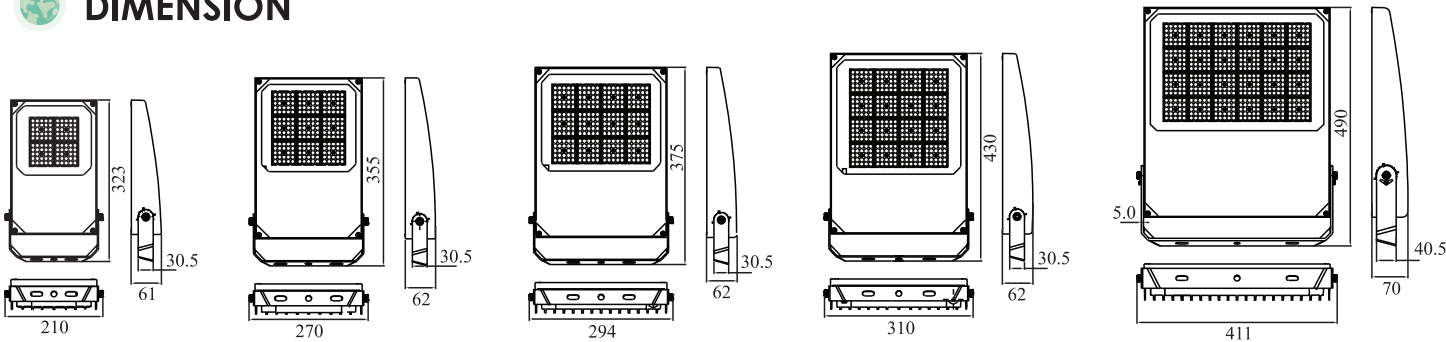
EY368
LED FLOODLIGHT
CBCE

PHOTOMETRIC/BEAM ANGLE

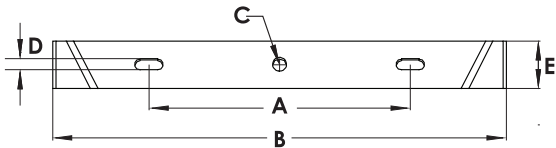


EY368:60W - 300W

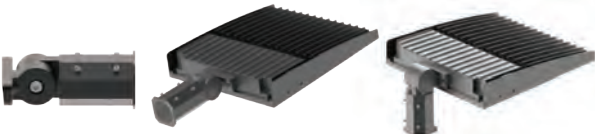
DIMENSION



BRACKET MOUNTING INFO



Customized Spigot Mount Adapter



Optional Mounting Accessory

Model	Bracket Mounting Dimension (mm)				
	A	B	C	D	E
60W	90	196.5	Ø 12.5	10.5	30
100W	130	256.6	Ø 12.5	10.5	30
150W	170	281.8	Ø 12.5	10.5	30
200W	170	298.8	Ø 12.5	10.5	30
240W	250	395.2	Ø 12.5	10.5	40
300W	250	395.2	Ø 12.5	10.5	40

MODEL NO.	EY368-60W	EY368-100W	EY368-150W	EY368-200W	EY368-240W	EY368-300W
Power Consumption $\pm 5\%$ (W)	60W	100W	150W	200W	240W	300W
Luminaire Flux $\pm 5\%$ (lm)	9,300 lm	15,500 lm	23,250 lm	31,000 lm	38,400 lm	46,500 lm
System Efficacy $\pm 5\%$ (lm/W)	155 lm/W	155 lm/W	155 lm/W	155 lm/W	160lm/W	155 lm/W
Power Factor (PF)	>0.95	>0.95	>0.95	>0.95	>0.95	>0.95
HID Equivalent	100W	150W	250W	400W	400W	400W
Internal Built-in Surge Protection Devices (kV)	6kV	6kV	6kV	6kV	6kV	6kV
Net Weight (kg)	2.26	3.15	3.65	4.35	7.05	7.50
Gross Weight (kg)	2.81	3.80	4.45	5.30	8.10	8.70
Product Dimension, L x W x H (mm)	323 x 210 x 61	355 x 270 x 62	375 x 294 x 62	430 x 310 x 62	490 x 411 x 70	490 x 411 x 70
Carton Dimension, L x W x H (mm)	380 x 250 x 90	410 x 310 x 100	450 x 335 x 100	485 x 355 x 100	565 x 455 x 115	565 x 455 x 115
CBM (m ³)	0.009	0.013	0.015	0.017	0.029	0.029

Note: The above specified lumen and system efficiency based on standard CCT: 6000K, Ra 70

Note: 30W, 40W & 50W is available upon request.

TECHNICAL SPECIFICATION

ELECTRICAL SYSTEM

- Input Voltage : 100 - 240Vac, 50/60Hz
- Insulation Class : Class I
- LED Driver : BQ Series
- Surge Protection Device : I_{max} 20kA

LIGHT SOURCE / OPTIC

- LED Type : SMD 2835 with TM21 and LM80
- Color Temperature : Standard 6000K
(CCT) (3000K and others upon request)
- Color Rendering Index : Ra > 70
(CRI) (Ra > 80, 90 upon request)
- Life Time Residual Flux : (L70), >50,000 hours @ Ta : 50°C
- Optical System : 30°, 60° & 90° (modular lens)
(Other professional lens available upon request)
- Protective Cover : Easy Wash Clear Tempered Glass
- Working Temperature : Ta : -25°C to + 40°C

APPLICATION

- Facade • Security • Signboard Lighting • Soffit
- Sport Lighting • Perimeter Lighting • Landscape

CERTIFICATION AND COMPLIANCE TEST

- Type Test Certified (Luminaire) : IEC 60598-1
: IEC 60598-2-5, IEC 62471
: EN 62493
- EMC Certified : EN 61000-3-2, EN 61000-3-3
: EN 55015, EN 61547
- LED Compliance Test : IESNA LM-80
: TM-21
- Ingress Protection Test : IEC 60529 (IP66)
- Impact Resistance Test : IEC 62262 (IK09)
- RoHS : IEC 62321

FIXTURE/HOUSING

- Ingress Protection (IP) : IP66
- Impact Resistance (IK) : IK09
- Housing Material : ADC 12 Die Cast Aluminium
- Housing Finish : Akzo Nobel Epoxy
Powder Coating - Grey

OPTIONAL FEATURES/ACCESSORIES

- Microwave Motion Sensor
- DALI / 1-10V Dimming Control
- IoT Smart Lighting Control (ZHAGA)
- ZHAGA ready

OUTDOOR LED LIGHTING

SHOSHA/FL

EY366

LED FLOOD LIGHT

LED STADIUM LIGHT

CB CE

EYELITE



LIGHT WEIGHT
AT \approx 20kg



OPTIONAL LIGHT CONTROL



Anti glare shield



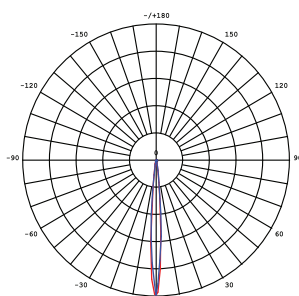
Light Shield

- An anti-glare shield can prevent unwanted light which causing discomfort, distraction, or a reduction invisibility.
- Light shield reduces upward light, and light pollution. (special order with extra charge upon request)

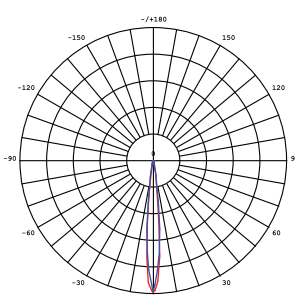


PHOTOMETRIC DATA/ BEAM ANGLE

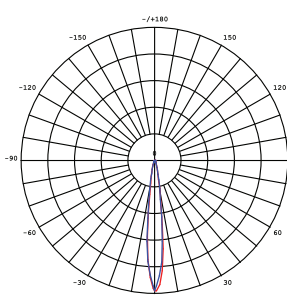
Other optics available upon request



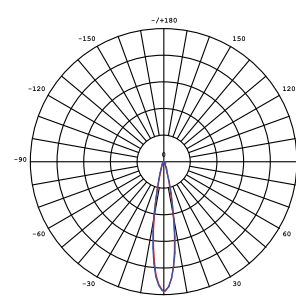
11°



13°



17°

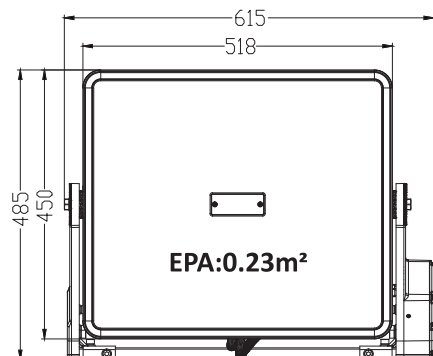


24°

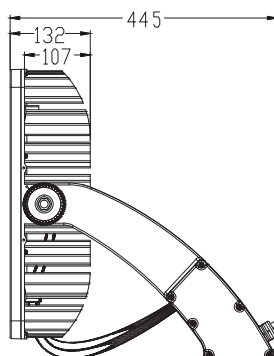


DIMENSION

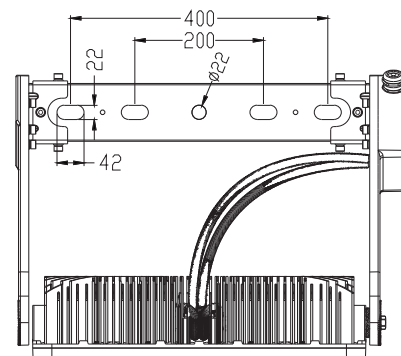
ALL DIMENSION IN mm



Front View



Side View



Rear View

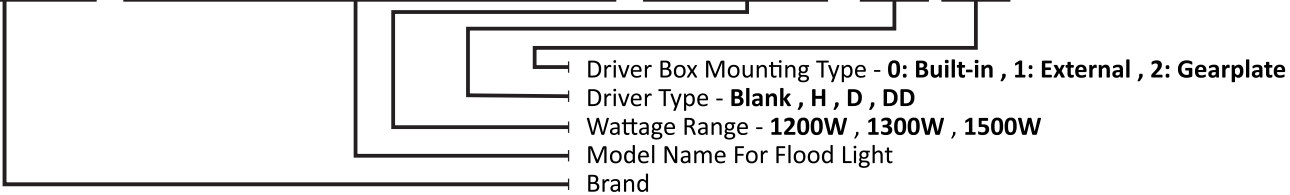
Note : For detail dimension please refer to the installation manual.

ORDERING CODE

(Fixture Configuration)

(Driver Type)

EYELITE-SHOSHA/FL-EY366-1500W-**H****0**

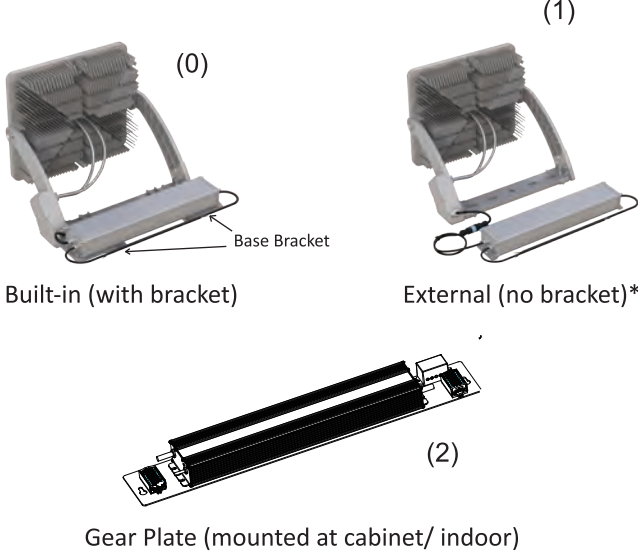
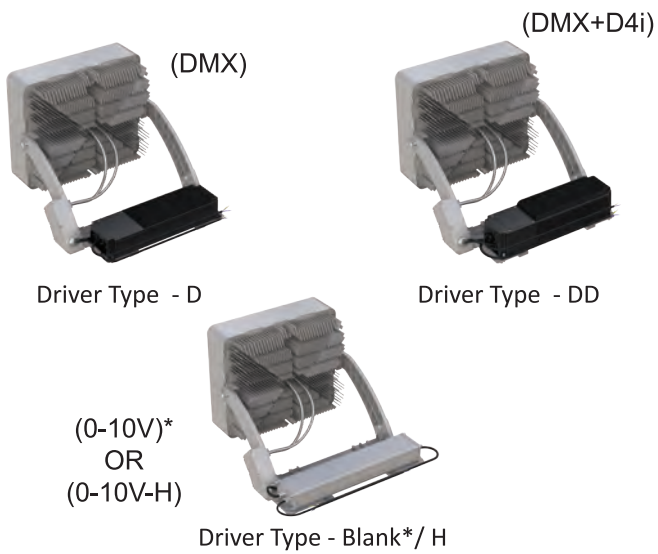


Code	Function	Input Voltage	Dimension (mm)
Blank*	0 - 10V	100 - 240 Vac	629 x 80 x 118
H	0 - 10V High Input Voltage	277 - 415 Vac	629 x 80 x 118
D	DMX	220 - 400 Vac	500 x 81 x 150
DD	DMX + D4i (DALI)	220 - 415 Vac	500 x 120 x 141

Note : Customer to specify color temperature (CCT), CRI (RA), Beam Angle, on top of the above ordering code upon purchase order.

DRIVER TYPE

DRIVER BOX MOUNTING TYPE

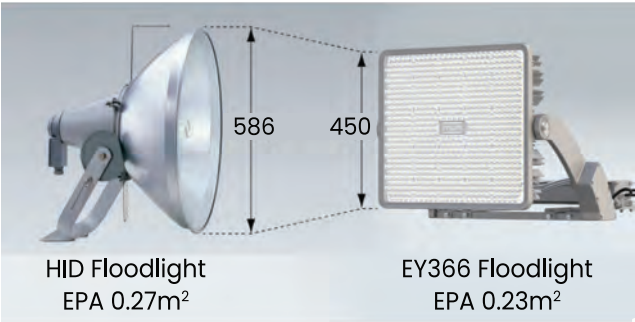


Note * : Standard Model.

PRODUCT FEATURES

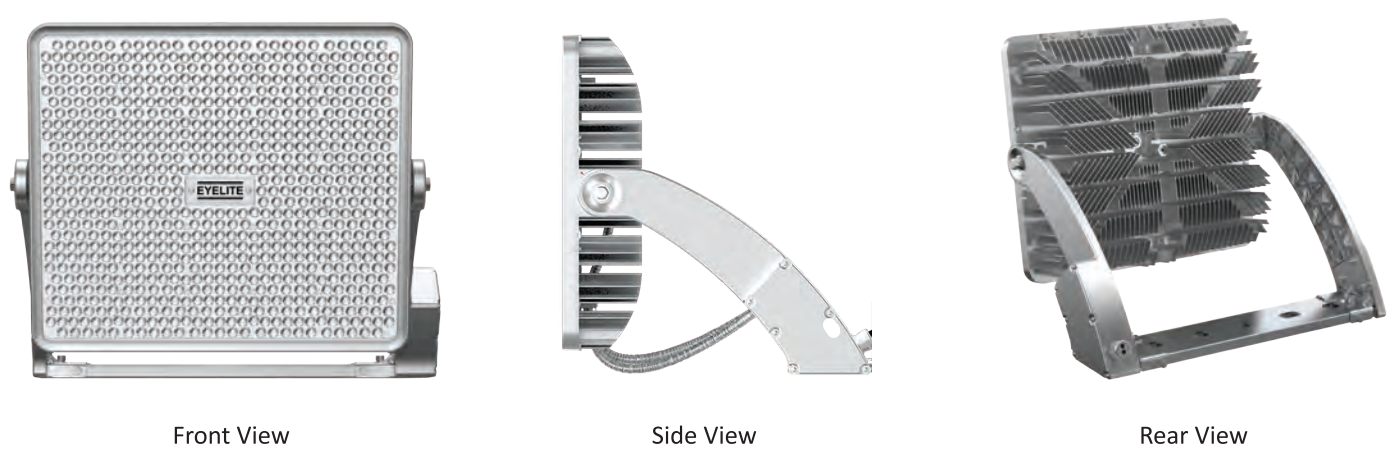
- Light weight LED fixture for easy installation & cost saving on mast / pole.
- Cold Forging Aluminum with excellent heat dissipation design.
- The IP66 rated sealed fixture protect it against water and dust in harsh outdoor environment.

- Superior light intensity with multi beam angle selection for sport lighting application.
- Best choice for direct retrofitting of up to 2000W Metal Halide Flood Light.



PRODUCT PICTURE

without driver box



TECHNICAL DATA

CB CE IP66 IK10

MODEL NO.	EY366-1200W-□□	EY366-1400W-□□	EY366-1500W-□□
Power Consumption ±5% (W)*2	1200W	1400W	1500W
Luminaire Flux ±5% (lm)*1	180,000	210,000	225,000
System Efficacy ±5% (lm/W)*1	150	150	150
Power Factor (PF)	>0.96	>0.96	>0.96
HID Equivalent	2000W	2000W	2000W
Net Weight (kg)*3	Lantern : 20.6 ± 0.5kg LED Driver : 6.8 ± 0.3kg		
Gross Weight (kg)*3	Lantern + LED Driver : 27.4 ± 1kg		
Product Dimension, L x W x H (mm)*3	Lantern : 615 x 485 x 445 LED Driver : 629 x 80 x 118		
Carton Dimension, L x W x H (mm)	Lantern + LED Driver : 750 x 680 x 215		
CBM (m³)	0.23		

Note 1 : The above specified lumen and system efficiency based on standard CCT: 5700K & 17° beam, CRI 70.
Note 2 : 1000W, 1100W, & 1300W available upon request.
Note 3 : Above data based on standard 0-10V Driver Type.

PRODUCT SUMMARY

ELECTRICAL SYSTEM



- **Power Consumption** : 1200W, 1400W, 1500W
(Others wattage upon request)
- **Input Voltage*** : 100 - 240Vac (50/60Hz)
(Based on 0-10V Driver Type)
- **Power Factor** : >0.96
- **Insulation Class** : Class I
- **LED Driver Type** : **0-10V** (Standard)
0-10V-H (High Voltage)
DMX-D (DMX)
DMX-DD (DALI D4I)
- **Surge Protection Devices** : I_{max} 25kA (40kV)

FIXTURE HOUSING



- **Housing Material** : Cold Forging Pure Aluminum AL1070
- **Housing Finish** : 1000h Salt Fog Grade
Powder Coating - RAL9006
- **Ingress Protection (IP)** : IP66 water & dust proof
- **Impact Resistance (IK)** : IK10 (20 Joules of Impact)
- **Driver Box** : Remote External or Bracket Built-in
- **Net Weight (kg) (Complete Luminaire)**
Fixture + Gearbox
Driver Type **H** : 20.6 ± 0.5 (Fixture)
6.8 ± 0.3 (Driver)
Driver Type **D** : 20.6 ± 0.5 (Fixture)
7.6 ± 0.3 (Driver)
Driver Type **DD** : 20.6 ± 0.5 (Fixture)
7.0 ± 0.3 (Driver)

STANDARDS & CERTIFICATION TEST



- **Type Test Certified CB-IEC (Luminaire)** : IEC 60598-1, IEC 60598-2-1
IEC 60598-2-5, IEC/TR 62778
IEC 62031, IEC 62493
- **EMC Certified (LED Driver)** : IEC 61000-3-2, IEC 61000-3-3
IEC 55015, EN 61547,
EN 62493
- **LED Compliances Test** : IESNA LM-80, TM-21
- **Ingress Protection Test** : IEC 60598 (**IP66**)
- **Impact Resistance Test** : IEC 62262 (**IK10**)
- **Vibration Test** : IEC 60068-2-6
(**5G vibration test**)
- **Photobiological Safety** : IEC 62471
- **SIRIM PCS (MALAYSIA)** : PC014325



APPLICATION

- Sport Lighting
- Highmast
- Façade Lighting
- Airport Apron
- Port Lighting
- Car Parks
- Toll Plaza
- Highway Interchange
- Quay Crane

LIGHT SOURCE / OPTIC SPECIFICATION



- **LED Type 1** : **SAMSUNG SMD 3535**
(13°, 17°, 24°)
- **LED Type 2** : **OSRAM SMD 3030**
(11°)
- **Color Temperature (CCT)** : Standard 5700K
(Others available upon request)
- **Color Rendering Index (CRI)** : Ra > 70
(Ra > 80, 90, TLCI90 upon request)
- **Life Time Residual Flux** : (L80), >50,000 hours @ Ta = 40°C
(L70), >100,000 hours @ Ta = 25°C
- **Optical System** : 11°, 13°, 17°, 24° Beam Angle
Japanese UV stabilized PC Lens
Cover
- **Working Temperature** : Ta : -25°C to + 40°C

OPTIONAL FEATURE/ ACCESSORIES

- DMX / DALI Control
- Smart Lighting Controller
- Customizable Wattage upon request
- Anti Glare Shield
- Light Shield (light cut off)

OUTDOOR LED LIGHTING

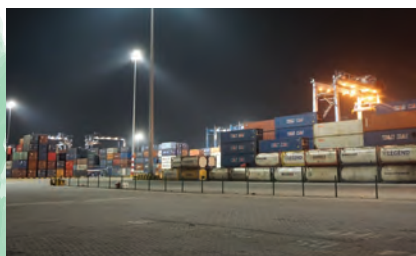
SHOSHA/FL

EY363-E

LED FLOOD LIGHT



EYELITE



Port Klang, Selangor



EY363- 240W • 320W



EY363- 450W • 480W • 600W



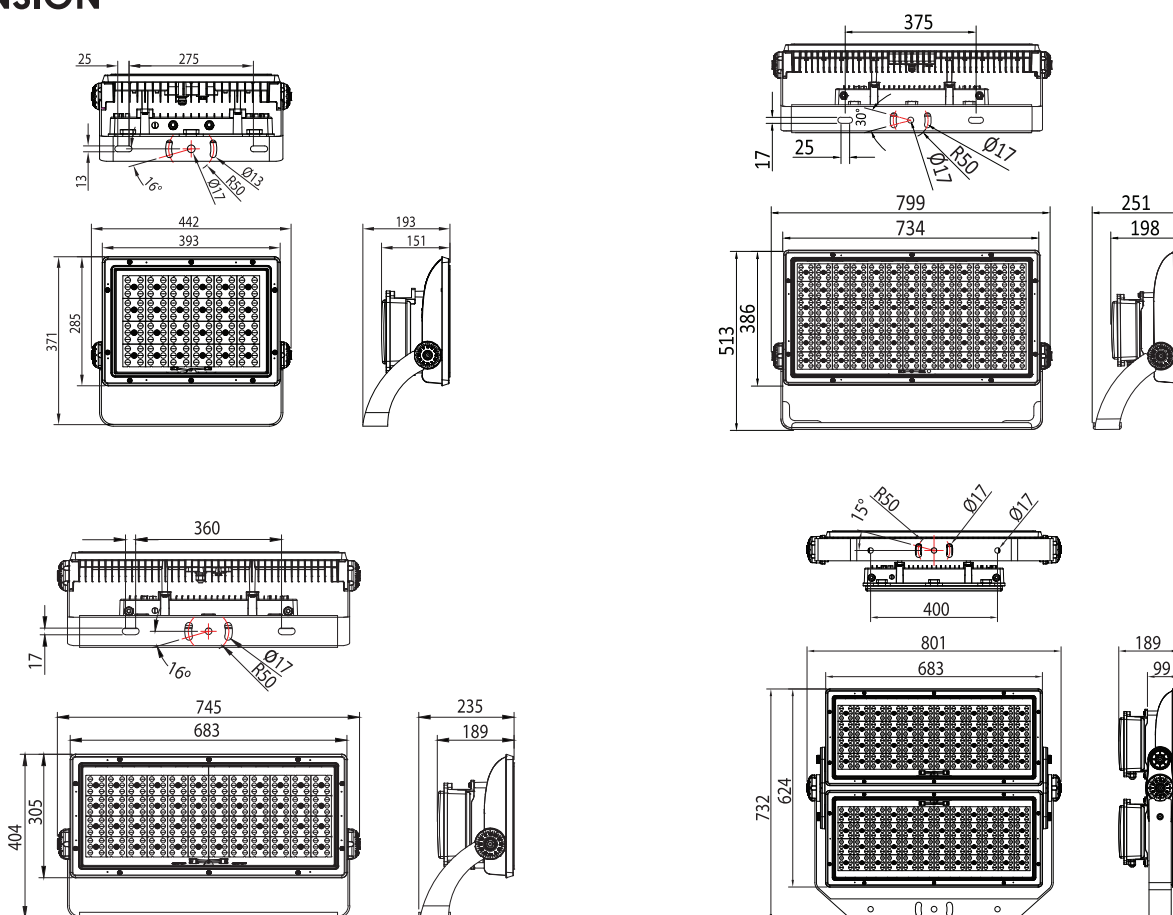
EY363- 700W • 750W • 800W



EY363- 900W • 960W • 1200W



DIMENSION





TECHNICAL DATA FOR (E) VERSION

CB CE**IP66****IK09****LED FLOOD LIGHT**

MODEL NO.	EY363-240W-E	EY363-320W-E	EY363-450W-E	EY363-480W-E	EY363-600W-E
Power Consumption ±5% (W)	240W	320W	450W	480W	600W
Luminaire Flux ±5% (lm)	38,400	49,568	66,735	71,184	86,160
System Efficacy ±5% (lm/W)	160	155	148	148	144
Power Factor (PF)	0.97	0.97	0.97	0.97	0.97
HID Equivalent	500W	1000W	1500W	1500W	1800W
Net Weight (kg)	7.7	8.4	19.1	19.1	19.1
Gross Weight (kg)	8.4	9.1	20.6	20.6	20.6
Product Dimension, L x W x H (mm)	442 x 371 x 193		746 x 406 x 240		
Carton Dimension, L x W x H (mm)	458 x 338 x 225		805 x 370 x 260		
CBM (m ³)	0.035		0.077		

MODEL NO.	EY363-700W-E	EY363-750W-E	EY363-800W-E	EY363-900W-E	EY363-960W-E	EY363-1200W-E
Power Consumption ±5% (W)	700W	750W	800W	900W	960W	1200W
Luminaire Flux ±5% (lm)	101,500	108,750	116,000	133,200	142,080	171,600
System Efficacy ±5% (lm/W)	145	145	145	148	148	143
Power Factor (PF)	0.97	0.97	0.97	0.97	0.97	0.97
HID Equivalent	MH1500W	MH1500W	MH1500W	MH1500W	MH2000W	MH2000W MH1800W
Net Weight (kg)	23.6	23.6	23.6	36.9	36.9	36.9
Gross Weight (kg)	26.5	26.5	26.5	39.2	39.2	39.2
Product Dimension, L x W x H (mm)	799 x 514 x 252			801 x 732 x 189		
Carton Dimension, L x W x H (mm)	835 x 420 x 232			860 x 770 x 262		
CBM (m ³)	0.081			0.172		

Note 1: The above specified lumen and system efficiency based on standard CCT: 5000K

Note 2: Other power 200W, 300W, 400W, 500W, 1000W, 1100W available upon request.

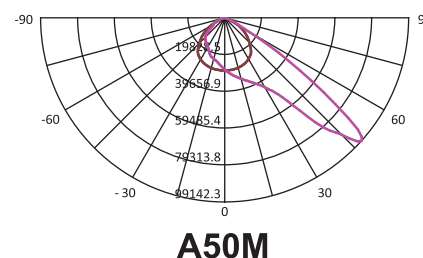
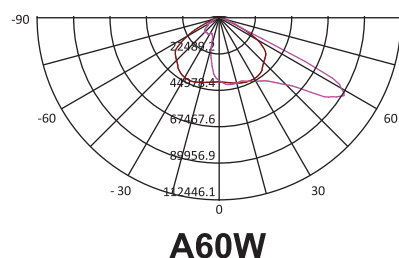
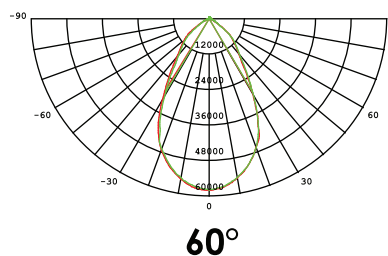
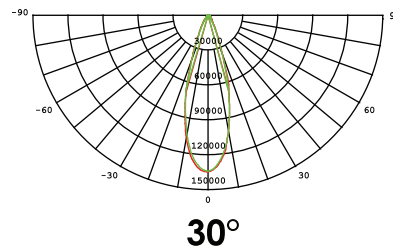
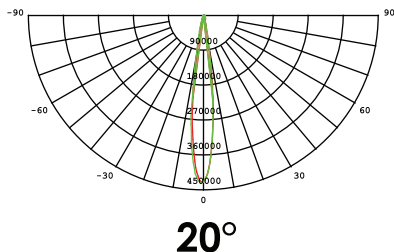
The above content are subjected to change without prior notice. 2025 © IWASAKI ELECTRIC CO., LTD. All Rights Reserved.

Official Website: : www.eyelighting.com.my (Malaysia), www.eye.co.jp (Japan)

SHOSHA/FL-EY363 25.02



PHOTOMETRIC/BEAM ANGLE



OPTIONAL ANTI-GLARE PROTECTION

Without glare shield

With Anti-Glare Shield



- With anti-glare shield it can prevent unwanted light which causing discomfort, distraction, or a reduction in visibility. (special order request)



OPTIONAL FEATURES/ ACCESSORIES

- Microwave Motion Sensor
- Smart Lighting Controller
- Customizable Wattage upon request



Crane Lighting



Port Yard Lighting



Sports Lighting

TECHNICAL SPECIFICATION - (E) VERSION

ELECTRICAL SYSTEM

- **Input Voltage** : 100 - 240Vac, 50/60Hz
- **Insulation Class** : Class I
- **LED Driver** : **SOSEN VP IP67**
- **Surge Protection Devices** : I_{max} 20kA (40kV)

LIGHT SOURCE / OPTIC

- **LED Type** : **TYF 5050 with TM21 and LM80**
: **OSRAM 3737 (For asymmetrical beam)**
- **Color Temperature (CCT)** : Standard 5000K
(Others upon request)
- **Color Rendering Index (CRI)** : Ra > 70
(Ra > 80, 90 upon request)
- **Life Time Residual Flux** : (L80), >50,000 hours
@ Ta = 40°C
- **Optical System** : 20°, 30° & 60° Beam Angle
: PC Lens with Tempered Glass Cover
- **Working Temperature** : Ta : -30°C to + 40°C

FIXTURE/HOUSING

- **Ingress Protection (IP)** : IP66
- **Impact Resistance (IK)** : IK09
- **Housing Material** : ADC 12 Die-Cast Aluminium
- **Housing Finish** : Powder Coating - RAL7005 Grey

COMPLIANCE

- **Type Test Certified (Luminaire)** : IEC 60598-1, IEC 60598-2-1
: IEC 60598-2-5, IEC/TR 62778
- **EMC Certified (LED Driver)** : IEC 61000-3-2, IEC 61000-3-3
: IEC 55015, EN 61547, EN 62493
- **LED Compliances Test** : IESNA LM-80, TM-21
- **Ingress Protection Test** : IEC 60529 (**IP66**)
- **Impact Resistance Test** : IEC 62262 (**IK09**)
- **RoHS Compliance** : EN62321
- **Vibration Test** : IEC 60068-2-6 (**5G vibration test**)
- **SIRIM PCS** : PC013455

APPLICATION

- Highway Interchange • Highmast • Façade Lighting
- Car Parks • Parks • Riverside • Sport Lighting
- Toll Plaza • Airport Apron • Quay Crane • Port Lighting

STOCK AVAILABILITY REGION - (E) VERSION

- MALAYSIA DEFAULT (E) VERSION
- OTHER REGION AVAILABLE UPON REQUEST
- AVAILABLE PROJECT BY PROJECT BASIS

INDUSTRIAL LED LIGHTING

TENJO/HB

EY968 LED HIGHBAY

CB CE 170lm/W

SIRIM certification by April 2025

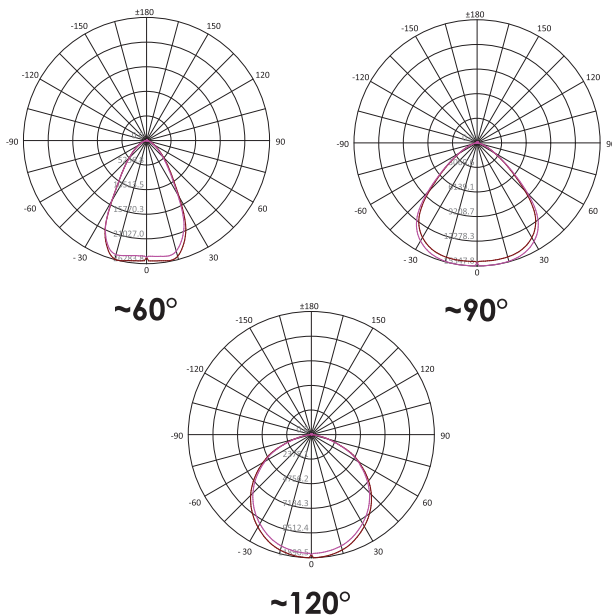
EYELITE



EY968-60W•300W



PHOTOMETRIC/BEAM ANGLE



*Motion sensor version is 100° beam angle.

Optional
Motion Sensor



Optional
Prismatic Reflector



Optional
U-Bracket
Mounting

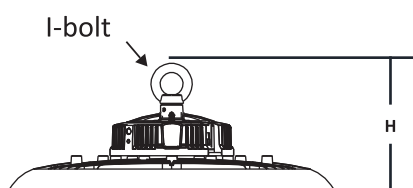
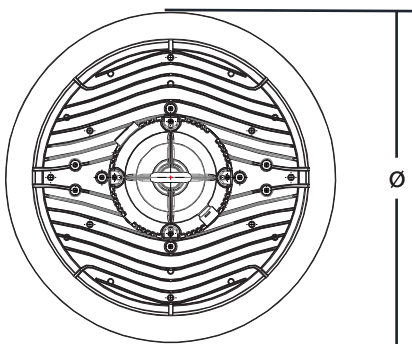


FEATURES

- High Efficiency LED Highbay up to **170lm/W**
- IP65 protection against moisture & dust
- Easy & Quick Installation/Maintenance
- Aluminium die-cast body with effective heat dissipation design



DIMENSION



- * Packaging Excludes Hook, and Chain.
- * Products completes with I-bolt and safety cable only.

EY968 DIMENSION

60W	80W	100W	120W	150W	200W	240W	300W
ø249 x 146				ø299 x 149	ø350 x 151	ø389 x 151	



I-bolt



Safety Cable

MODEL NO.	EY968-60W	EY968-80W	EY968-100W	EY968-120W	EY968-150W	EY968-200W	EY968-240W	EY968-300W
Power Consumption $\pm 5\%$ (W)	60W	80W	100W	120W	150W	200W	240W	300W
Luminaire Flux $\pm 5\%$ (lm)	10,800	14,000	17,000	20,400	25,500	34,000	40,800	51,000
System Efficacy ± 5 (lm/W)	180	175	170	170	170	170	170	170
Power Factor (PF)	> 0.95	> 0.95	> 0.95	> 0.95	> 0.95	> 0.95	> 0.95	> 0.95
Input Current @ 240Vac(A)	0.25A	0.33A	0.42A	0.50A	0.63A	0.83A	1.00A	1.25A
HID Equivalent	MH125W MH70W	MV250W MH150W	MV400W MH250W	MV400W MH250W	MV400W MH400W CMH250	MV700W CMH400	MV700W CMH400	MV1000W MH700W
Net Weight (kg)	1.45	1.45	1.45	1.45	1.85	2.35	3.05	3.40
Gross Weight (kg)	2.10	2.10	2.10	2.10	2.80	3.50	4.45	4.65
Dimension (mm)	$\varnothing 249 \times 146$			$\varnothing 299 \times 149$		$\varnothing 350 \times 151$	$\varnothing 389 \times 151$	
Carton Dimension, L x W x H (mm)	300 x 300 x 130			350 x 350 x 130		410 x 410 x 130	435 x 435 x 140	
CBM (m ³)	0.012			0.016		0.022	0.026	

Note: The above specified lumen and system efficiency based on standard CCT: 6000K, Beam: 90deg, Ra>70 without optional accessories.

TECHNICAL SPECIFICATION

ELECTRICAL SYSTEM

- Input Voltage : 100 - 240Vac, 50/60Hz, PF > 0.95
- Driver Type : Standard Non-Dimmable Driver
- Insulation Class : Class I

LIGHT SOURCE / OPTIC

- LED Type : SMD 2835 with TM21 and LM80
- Color Temperature : 6000K
(Others CCT upon request)
- Color Rendering Index : Ra > 70
(CRI) (Ra > 80, 90 upon request)
- Life Time Residual Flux : (L70), >50,000 hours @ Ta: 40°C
- Optical System : Standard stock 90°
(60° and 120° Upon Available Request)
- Working Temperature : Ta = -10° to + 40°C

FIXTURE/HOUSING

- Ingress Protection (IP) : IP65
- Housing Material : ADC 12 die-cast Aluminium
- Housing Finish : Akzo Nobel Epoxy Powder Coating - Black

COMPLIANCE

- Type Test Certified (Luminaire) : IEC 60598-1
: IEC 60598-2-1
- EMC Certified : EN 61000-3-2, EN 61000-3-3
: EN 55015, EN 61547
- LED Compliances Test : IESNA LM-80
: TM-21
- SIRIM PCS READY BY APRIL 2025

OPTIONAL FEATURES/ACCESSORIES

- Microwave Motion Sensor (Standard/Bluetooth)
- DALI / 1-10V / 0-10V dimming Control
- Smart Control System (ZHAGA)
- Daylight Sensor/ other sensor
- U-Bracket Mounting
- Prismatic Anti Glare PC Reflector

APPLICATION

- Warehouse
- Factory
- Halls & Retails
- Hangar
- Sport Centre

OUTDOOR LED LIGHTING

SANBO/WP

EY253

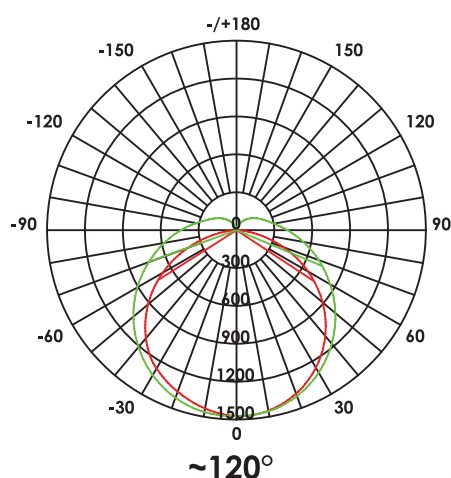
LED WEATHER-PROOF

CB CE CE-RED

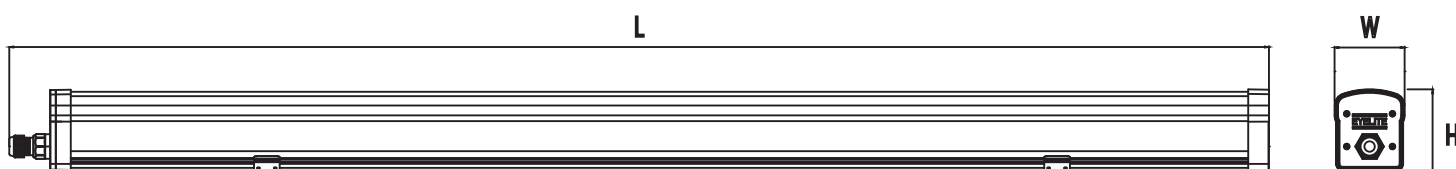
*Microwave motion sensor luminaire model



PHOTOMETRIC/BEAM ANGLE



DIMENSION



FEATURES

- 2024 upgraded efficacy to 120lm/W with further optional upgrade to 150lm/W with MOQ
- Rigid extrusion of PC housing and Injection molding of PC covers
- Protection against water and dust (IP65) and impact (IK10)
- High lumen output provides energy saving
- Flicker Free LED Lighting, Smooth video recording under the light, comfortable to eyes.



KLIA, Malaysia



OPTIONAL FEATURES/ACCESSORIES

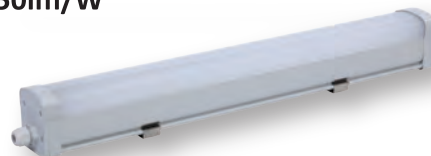
- Series Connection Double End Plug-in Version - EY253-36W-SC
- Microwave Motion Sensor - EY253-36W-MS
- DALI / 1-10V Dimming Control



ESPLANADE, Singapore

Upgraded to
120lm/W

Optional 150lm/W



EY253-18W



EY253-18WL•36W



EY253-50W

MODEL NO.	EY253-18W(2ft)	EY253-18WL(4ft)	EY253-36W(4ft)	EY253-50W(5ft)
Power Consumption $\pm 5\%$ (W)	18W	18W	36W	50W
Luminaire Flux $\pm 5\%$ (lm)	2,160 lm	2,160 lm	4,320 lm	6,000 lm
System Efficacy $\pm 5\%$ (lm/W)	120 lm/W	120 lm/W	120 lm/W	120 lm/W
Power Factor (PF)	0.98	0.98	0.98	0.98
Replacement of Magnetic Fluorescent	1 x 36W	1 x 36W	2 x 36W	2 x 58W
Total Harmonic Distortion (THD) %	<10%	<20%	<10%	<10%
Colour Tolerance (SDCM)	≤ 6	≤ 6	≤ 6	≤ 6
Net Weight (kg)	0.71	1.08	1.10	1.32
Gross Weight (kg)	18.38	22.15	22.15	20.15
Product Dimension, L x W x H (mm)	650 x 71 x 82	1250 x 71 x 82	1250 x 71 x 82	1550 x 71 x 82
Individual Carton Dimension, L x W x H (mm)	660 x 75 x 85	1260 x 75 x 85	1260 x 75 x 85	1560 x 75 x 85
Master Carton Dimension, L x W x H (mm)	680 x 330 x 460	1280 x 330 x 370	1280 x 330 x 370	1575 x 250 x 370
Quantity/Master Carton (pcs)	20	16	16	12
CBM (m ³)	0.103	0.156	0.156	0.146

Note: The above specified lumen and system efficiency based on standard CCT: 6500K.

TECHNICAL SPECIFICATION

ELECTRICAL SYSTEM

- Input Voltage : 200 - 240Vac, 50/60Hz
- Insulation Class : Class I
- LED Driver : Flicker Free - isolated
Tridonic/OSRAM

LIGHT SOURCE / OPTIC

- LED Type : SMD 2835 with TM21 and LM80
- Color Temperature : Standard 4000K/6500K
(CCT) (3000K and others upon request)
- Color Rendering Index : Ra > 80
(CRI) (Ra > 90 upon request)
- Life Time Residual Flux : (L70), >50,000 hours @ Ta: 40°C
- Optical System : ~120° Opal PC Extrusion Diffuser
- Working Temperature : Ta : -30°C to +40°C

FIXTURE/HOUSING

- Ingress Protection (IP) : IP65
- Impact Resistance (IK) : IK10
- Housing Material : PC Extrusion and PC Side Covers
: UL-94 Fire Retardant Grade
: UV Stabilized Polycarbonate

CERTIFICATION AND COMPLIANCE TEST

- Type Test Certified (Luminaire) : CB Scheme IEC 60598-1, EN 60598-1
: IEC & EN 60598-2-1, IEC/EN 62471
: EN 62493
- EMC Certified : EN 61000-3-2, EN 61000-3-3
: EN 55015, EN 61547
- LED Compliance Test : IESNA LM-80
: TM-21
- Ingress Protection Test : Accord to IEC 60598-1 (IP65)
- Impact Resistance Test : IEC 62262 (IK08)
- RoHS : IEC 62321

APPLICATION

- Carpark • Staircase • Canopy • Garden Shed • Walkway
- Corridors • Factory • Warehouse • Underpass • VBC

*Luminaires should be mounted in a shady or covered environment protected against direct sunlight. Due to the possible chemical reaction of polymer nature of housing, luminaire must not be installed in places where there are presence of high concentration of acid or alkaline environment.

Bandar 34, Bera, Pahang



Pines Square, Sarawak



**Stadium Azman Hashim
(UTM), Johor**



University Malaya, Selangor

Prima Lukut, Negeri Sembilan

Masjid Shah Alam, Selangor



Sungai Melaka, Melaka

Port Klang, Selangor

EYELITE

EYE IWASAKI ELECTRIC CO., LTD. (Japan)

Address: 1-1-7 Higashi-nihonbashi, Chuo-Ku, Tokyo 103-0004 Japan.

Tel: +81-3-5847 8630

Fax: +81-3-5847 8647

Email: sales@eye.co.jp



EYE EYE LIGHTING ASIA PACIFIC PTE LTD (Singapore)

Address: 21 Kaki Bukit Place Eunos Techpark, Singapore 416 199

Tel: +65-6742 3611

Fax: +65-6743 5202

Email: support@eyelighting.com.sg



EYE ELM LIGHTING SDN BHD (Malaysia)

Address: No.14A, Jalan Meteor U16/153, Elmina Seksyen U16,
40160 Shah Alam, Selangor, Malaysia.

Tel 1: +6011-1875 9366

Tel 2: 03-7832 7600

Email: sales@elmlighting.com.my



EYE EYE LIGHTING AUSTRALIA PTY LTD (Australia)

Address: 15 Industrial Avenue Wacol QLD 4076

Tel: +61-(0)7-3335-3555

Fax: +61-(0)7-3335-3555

Email: info@eli.com.au



**TOWARDS
SUSTAINABILITY**



Linktree



Website



Facebook