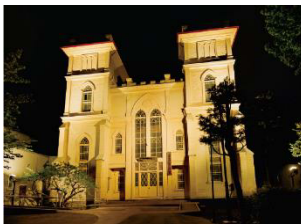


LED Floodlight

LEDioc Floodlight Class 40

ECF0498D(N,W,LW,L)/SAN8/DG(W)
ECF0497D(N,W,LW,L)/SAN8/DG(W)
ECF0496D(N,W,LW,L)/SAN8/DG(W)
ECF0495D(N,W,LW,L)/SAN8/DG(W)



Example of Construction (Image)

- Capable of delivering brightness equivalent to a 70W metal halide lamp (5000K/Ra70 type)
- Proprietary light distribution control technology allows for four types of luminous intensity distribution: narrow, medium, wide and super wide beam
- Lineup : 6500K, 5000K, 4000K, 3000K, 2700K
- High Colour Rendering (Ra80) version allows for vivid illumination of objects
- A highly efficient (140.9lm/W) version is also available in 5000K (super wide beam / Ra70)
- "Any Position" structure allows for various mounting directions and installation
- Quickly reaches full brightness
- Long life : 60,000 hours
- Utilizes highly efficient/high-powered COB-type LED package

Offering top-class energy saving performance, this series has been created through a careful combination of lens and mirror technology, and efficient usage of electrical power. With COB (Chip on board) type lighting, large numbers of LED devices are mounted directly onto substrate. With light therefore being emitted from a single, uniform surface, an even and natural level of brightness can be achieved.



Product Series

Model Number	Consumption	CCT	CRI	Luminous Flux	Beam Angle	Luminous Efficacy
ECF0498D/SAN8/DG(W)	44W	6500K	70	5510 lm	Narrow beam	125.2 lm/W
ECF0498N/SAN8/DG(W)	44W	5000K	70	5800 lm	Narrow beam	131.8 lm/W
ECF0498W/SAN8/DG(W)	44W	4000K	80	5240 lm	Narrow beam	119.0 lm/W
ECF0498LW/SAN8/DG(W)	44W	3000K	80	4970 lm	Narrow beam	112.9 lm/W
ECF0498L/SAN8/DG(W)	44W	2700K	80	4760 lm	Narrow beam	108.1 lm/W
ECF0497D/SAN8/DG(W)	44W	6500K	70	5510 lm	Medium beam	125.2 lm/W
ECF0497N/SAN8/DG(W)	44W	5000K	70	5800 lm	Medium beam	131.8 lm/W
ECF0497W/SAN8/DG(W)	44W	4000K	80	5240 lm	Medium beam	119.0 lm/W
ECF0497LW/SAN8/DG(W)	44W	3000K	80	4970 lm	Medium beam	112.9 lm/W
ECF0497L/SAN8/DG(W)	44W	2700K	80	4760 lm	Medium beam	108.1 lm/W
ECF0496D/SAN8/DG(W)	44W	6500K	70	5510 lm	Wide beam	125.2 lm/W
ECF0496N/SAN8/DG(W)	44W	5000K	70	5800 lm	Wide beam	131.8 lm/W
ECF0496W/SAN8/DG(W)	44W	4000K	80	5240 lm	Wide beam	119.0 lm/W
ECF0496LW/SAN8/DG(W)	44W	3000K	80	4970 lm	Wide beam	112.9 lm/W
ECF0496L/SAN8/DG(W)	44W	2700K	80	4760 lm	Wide beam	108.1 lm/W
ECF0495D/SAN8/DG(W)	44W	6500K	70	5890 lm	Super Wide beam	133.8 lm/W
ECF0495N/SAN8/DG(W)	44W	5000K	70	6200 lm	Super Wide beam	140.9 lm/W
ECF0495W/SAN8/DG(W)	44W	4000K	80	5490 lm	Super Wide beam	124.7 lm/W
ECF0495LW/SAN8/DG(W)	44W	3000K	80	5190 lm	Super Wide beam	117.9 lm/W
ECF0495L/SAN8/DG(W)	44W	2700K	80	4990 lm	Super Wide beam	113.4 lm/W

Specifications

- Operation Temperature Range : -20~+35°C
- IP Code : IP65

Optical

- Beam Angle : Narrow/ Medium/ Wide/ Super Wide beam
- 1/10 Beam Angle : 72° / 78° / 80° × 104° / 130° × 148°
- Color Rendering Index : 70 or 80
- Rated Luminous Flux : 4760 - 6200 lm
- Luminous Efficacy : 108.1 – 140.9 lm/W
- Lumen Maintenance (L80) : 60,000 hours at 35°C

Electrical

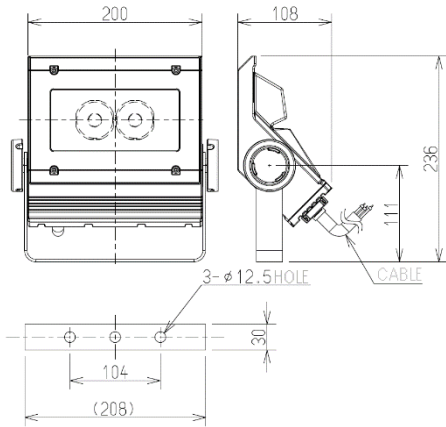
- Built-in Power Supply
- Input Voltage : 100/200-242V
- Line Frequency : 50/60Hz
- Power Consumption : 44W

Mechanical

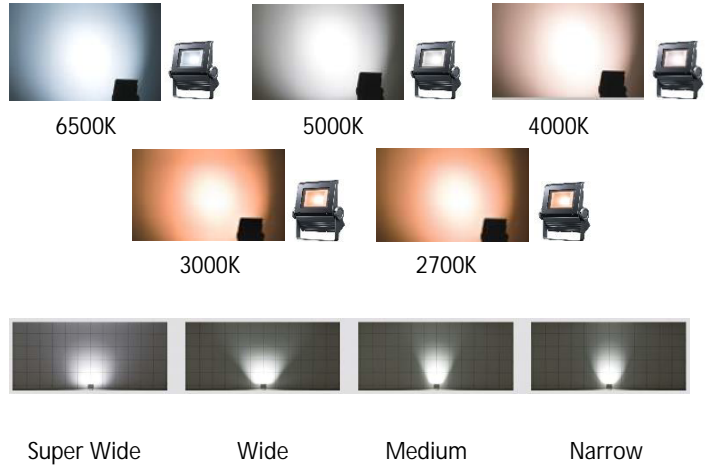
- Body(except front part) : Diecast aluminum
- Front Cover : Tempered glass
- Finish Color : Dark grey or White

Physical

- Dimensions : W200×H236×D108mm
- Weight : 2.8kg

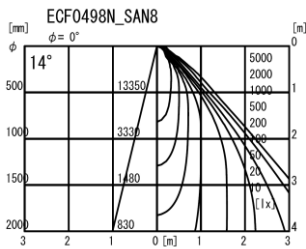


Lighting Image



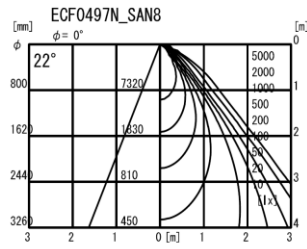
Photometric

ECF0498N/SAN8/DG(W)
CCT : 5000K , CRI : 70
Beam Angle : **Narrow**



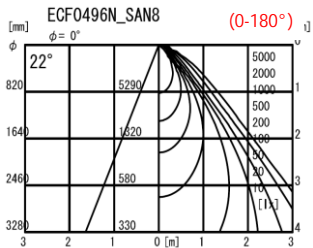
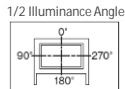
*The angle is 1/2 illuminance angle , not beam angle.

ECF0497N/SAN8/DG(W)
CCT : 5000K , CRI : 70
Beam Angle : **Medium**



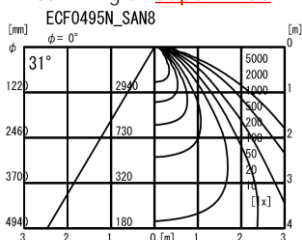
*The angle is 1/2 illuminance angle , not beam angle.

ECF0496N/SAN8/DG(W)
CCT : 5000K , CRI : 70
Beam Angle : **Wide**

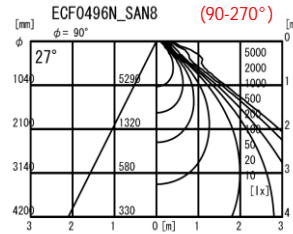


*The angle is 1/2 illuminance angle , not beam angle.

ECF0495N/SAN8/DG(W)
CCT : 5000K , CRI : 70
Beam Angle : **Super Wide**



*The angle is 1/2 illuminance angle , not beam angle.



*The angle is 1/2 illuminance angle , not beam angle.