

# LEDiOC HB III

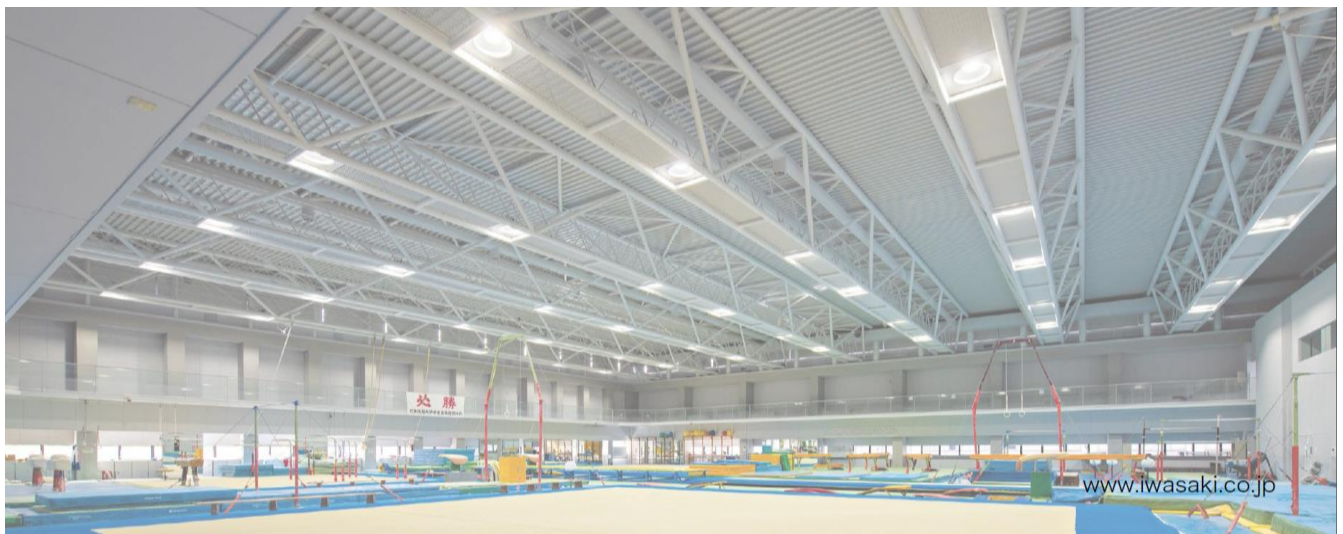
The multi-use high-bay light now becomes lighter and more energy-saving!

- The weight is lighter by up to 45% than the last generation HB II.
- Luminous Efficacy is more efficient by up to 30%, hits up to 175 lm/W.
- The DALI control system now is available for the full product line-up.


**Product Line-up**

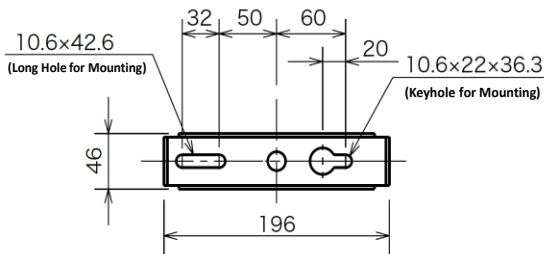
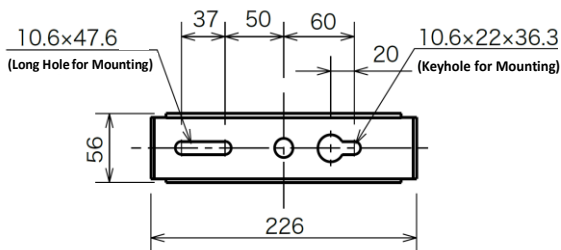
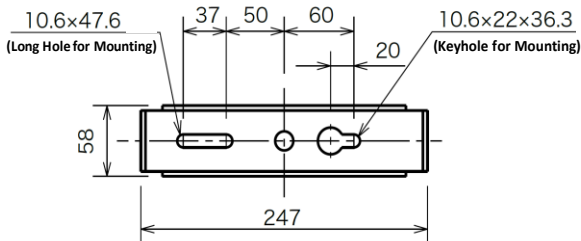
Model Number		Power Consumption	Mounting Type	Net Weight	Dimension (D, H)	Luminous Flux	Luminous Efficacy	CRI & CCT
Standard	DALI Control							
EHWP0814W/740/E EHWP0814W/750/E	EHWP0814W/740/D/E EHWP0814W/750/D/E	80 W	Bracket	3.4 kg (DALI: 3.5 kg)	Φ239 mm, 228 mm	13,600 lm	170.0 lm/W	Ra70, 4000K Ra70, 5000K
EHWP0815W/740/E EHWP0815W/750/E	EHWP0815W/740/D/E EHWP0815W/750/D/E	80 W	Eye Bolt	2.7 kg (DALI: 2.8 kg)	Φ239 mm, 228 mm	13,600 lm	170.0 lm/W	Ra70, 4000K Ra70, 5000K
EHWP1014W/740/E EHWP1014W/750/E	EHWP1014W/740/D/E EHWP1014W/750/D/E	100 W	Bracket	3.4 kg (DALI: 3.5 kg)	Φ239 mm, 228 mm	16,900 lm	169.0 lm/W	Ra70, 4000K Ra70, 5000K
EHWP1015W/740/E EHWP1015W/750/E	EHWP1015W/740/D/E EHWP1015W/750/D/E	100 W	Eye Bolt	2.7 kg (DALI: 2.8 kg)	Φ239 mm, 228 mm	16,900 lm	169.0 lm/W	Ra70, 4000K Ra70, 5000K
EHWP1214W/740/E EHWP1214W/750/E	EHWP1214W/740/D/E EHWP1214W/750/D/E	120 W	Bracket	4.7 kg (DALI: 4.8 kg)	Φ270.5 mm, 225 mm	21,000 lm	175.0 lm/W	Ra70, 4000K Ra70, 5000K
EHWP1215W/740/E EHWP1215W/750/E	EHWP1215W/740/D/E EHWP1215W/750/D/E	120 W	Eye Bolt	3.9 kg (DALI: 4.0 kg)	Φ270.5 mm, 225 mm	21,000 lm	175.0 lm/W	Ra70, 4000K Ra70, 5000K
EHWP1614W/740/E EHWP1614W/750/E	EHWP1614W/740/D/E EHWP1614W/750/D/E	160 W	Bracket	4.7 kg (DALI: 4.8 kg)	Φ270.5 mm, 225 mm	27,300 lm	170.6 lm/W	Ra70, 4000K Ra70, 5000K
EHWP1615W/740/E EHWP1615W/750/E	EHWP1615W/740/D/E EHWP1615W/750/D/E	160 W	Eye Bolt	3.9 kg (DALI: 4.0 kg)	Φ270.5 mm, 225 mm	27,300 lm	170.6 lm/W	Ra70, 4000K Ra70, 5000K
EHWP2514W/740/E EHWP2514W/750/E	EHWP2514W/740/D/E EHWP2514W/750/D/E	250 W	Bracket	8.6 kg (DALI: 8.7 kg)	Φ385 mm, 276 mm	42,200 lm	168.0 lm/W	Ra70, 4000K Ra70, 5000K
EHWP2515W/740/E EHWP2515W/750/E	EHWP2515W/740/D/E EHWP2515W/750/D/E	250 W	Eye Bolt	7.8 kg (DALI: 7.9 kg)	Φ385 mm, 276 mm	42,200 lm	168.0 lm/W	Ra70, 4000K Ra70, 5000K

❖ The safety wire and bracket are not included with the “Eye Bolt Mounting Type”.



**Common Specification**

- **Housing** : Aluminium Alloy
- **Front Cover** : Tempered Glass(t3.0 mm)
- **Bracket** : Steel (80~160W:t3.0mm; 250W:t4.0mm)
- **Eye Bolt** : GEOMET plated Stainless Steel
- **Finish Color** : Metallic Silver
- **Ingress Protection** : IP65
- **Impact Resistance** : IK10(housing, bracket), IK08(front cover)
- **Bracket Dimension** : Refer to following figure.
- **Safety Wire** : 2 pcs included
- **Bracket Dimension** : Refer to figure (1) ~ (3) below.


**(1) 80W, 100W**

**(2) 120W, 160W**

**(3) 250W**

- **Mounting Orientation** : Vertical Wall, Horizontal Ceiling, Sloped Ceiling  
(Only available for "bracket mounting type")



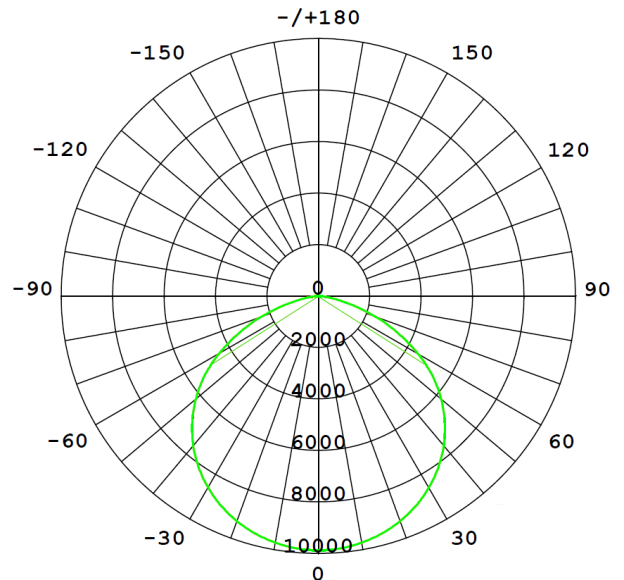
- **Service Temperature** : EHWP08~16\*\*\*: Ambient -30°C ~ +50°C  
EHWP25\*\*\*: Ambient -30°C ~ +40°C

**Electrical Features**

- **LED Driver** : Built-in Power Supply Unit
- **Input Voltage** : 100 ~ 240 V
- **Line Frequency** : 50/60 Hz
- **Power Factor** : > 0.95 when full loaded

**Optical Features**

- **Lumen Maintenance** : 60,000 hours (L90)
- **Distribution** : Wide Beam (115° )
- **Distribution Image** : Refer to the figure below (160W)


**Accessory**

Product Name	Front Guard - S (for 80W,100W)	Front Guard - M (for 120W,160W)	Front Guard - L (for 250W)	Chain Mounting Kit	Ceiling Mounting Kit
Model Number	GEHC10	GEHC11	GEHC03	FB21	FB31
Product Image					